

Targeted delivery and endosomal cellular uptake of DARPin-siRNA bioconjugates: Influence of linker stability on gene silencing

Cornelia Lorenzer, Sonja Streußnig, Emilia Tot, Anna-Maria Winkler, Hannes Merten, Fabian Brandl, Edward J. Sayers, Peter Watson, Arwyn T. Jones, Uwe Zangemeister-Wittke, Andreas Plückthun, Johannes Winkler

Supplementary Information

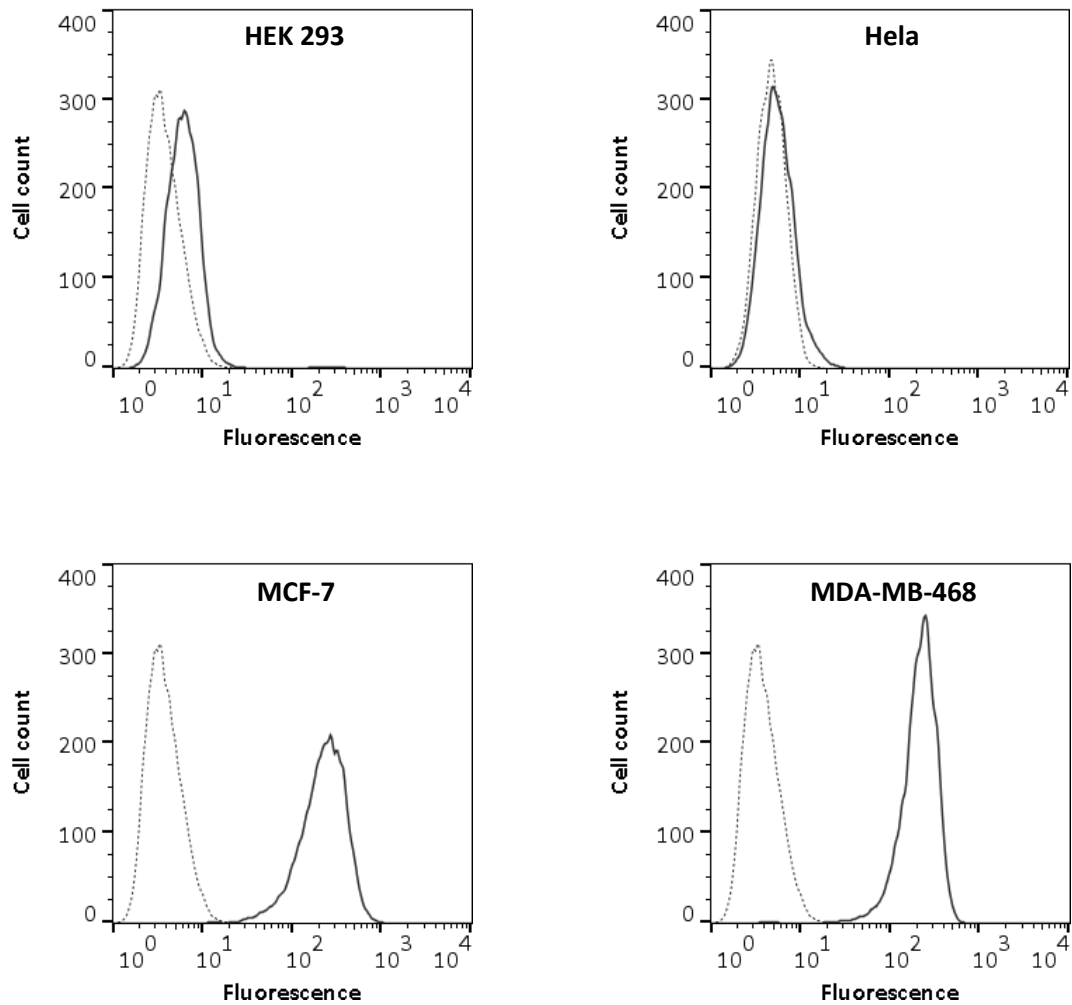
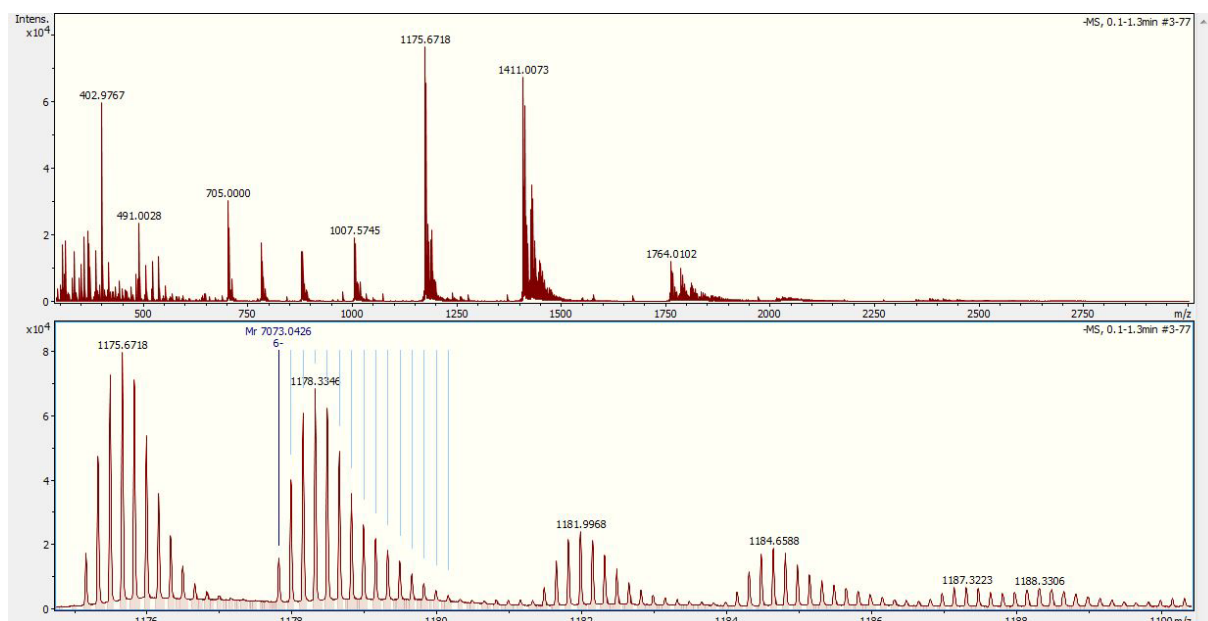
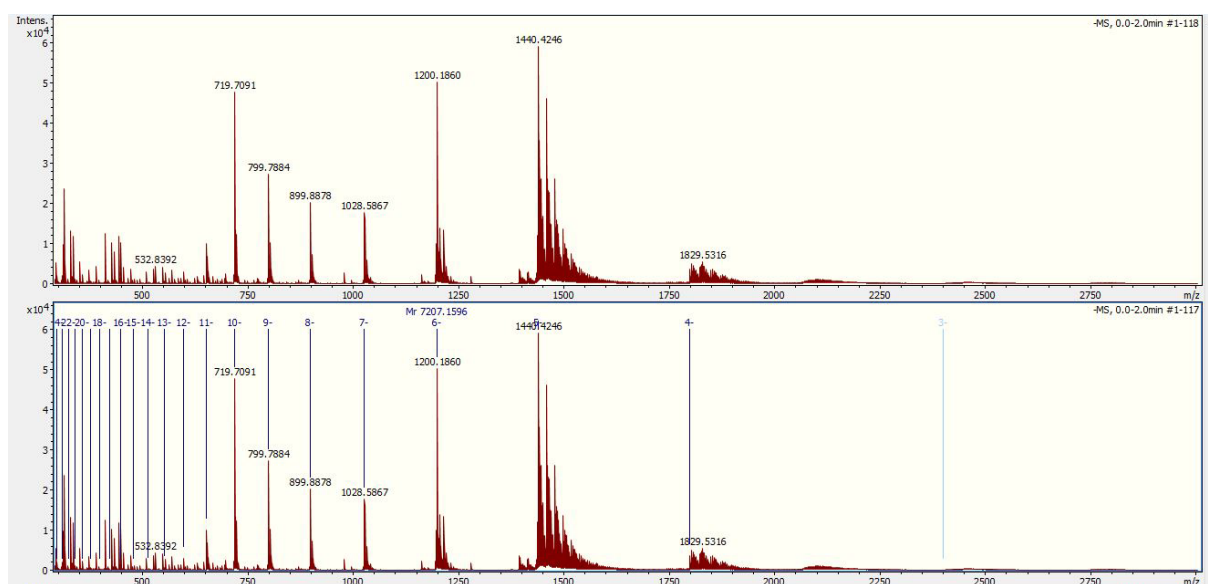


Figure S1. EpCAM surface expression analysis by flow cytometry. The indicated cell lines were incubated with anti-EpCAM-FITC antibody (Sigma-Aldrich, SAB4700424, clone VU-1D9, 1:5 dilution according to manufacturer's instructions) at 4°C for one hour and analysed by flow cytometry. Fluorescence signals of antibody-stained cells are shown in black. The grey dotted line represents auto-fluorescence of untreated cells. Geometric mean values of antibody binding vs. autofluorescence are: 6.22/3.77 (HEK 293); 5.58/4.76 (Hela); 209/3.82 (MCF-7); 200/3.78 (MDA-MB-468).

Pyridyldithiol oligonucleotide



Maleimide oligonucleotide



DBCO oligonucleotide

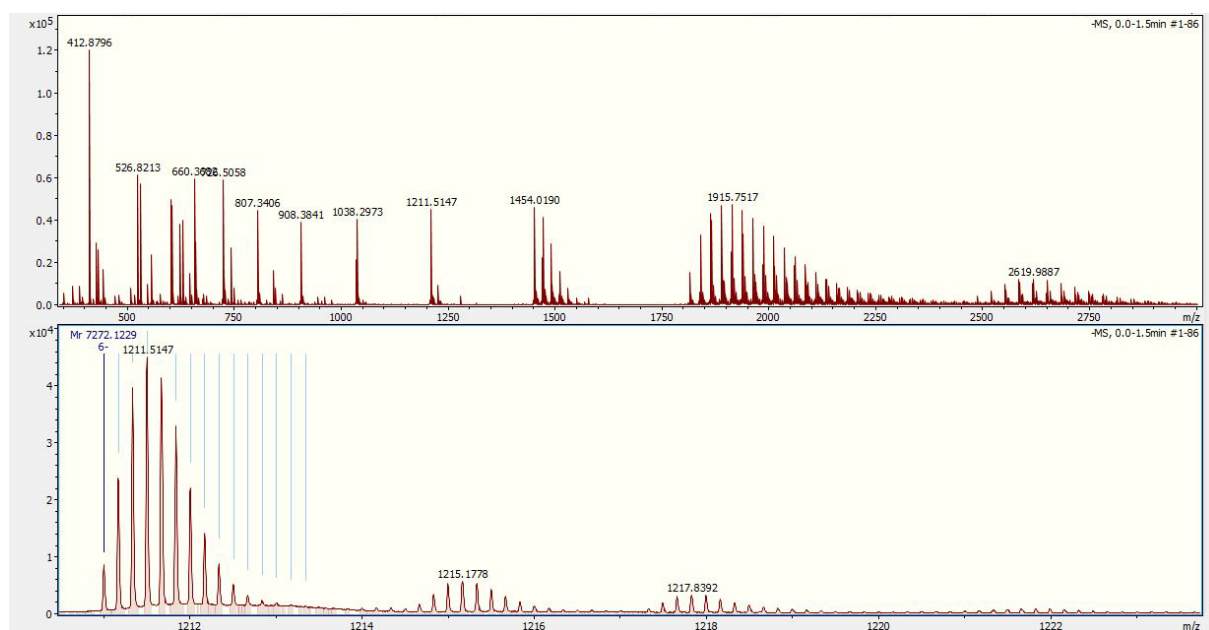


Figure S2. ESI-MS spectra of linker modified oligonucleotides.