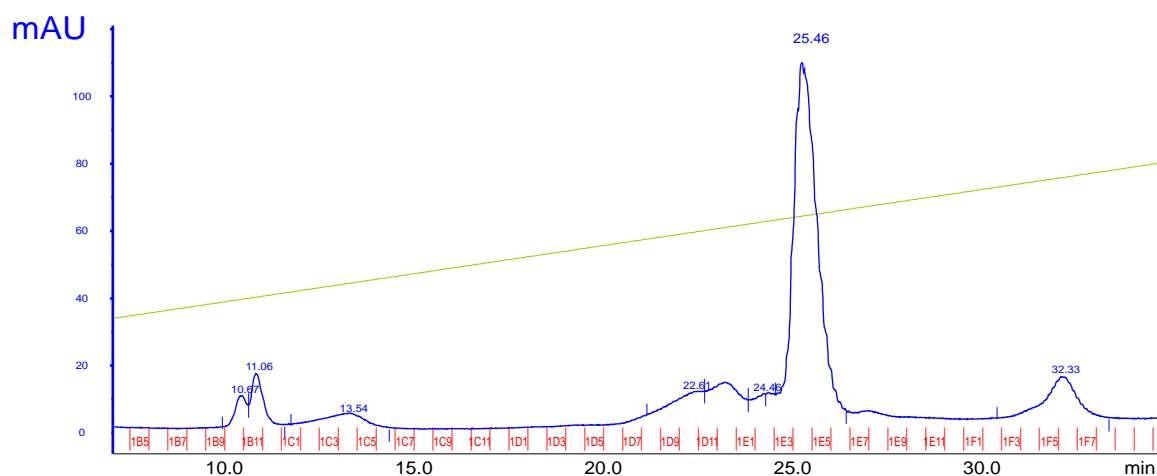
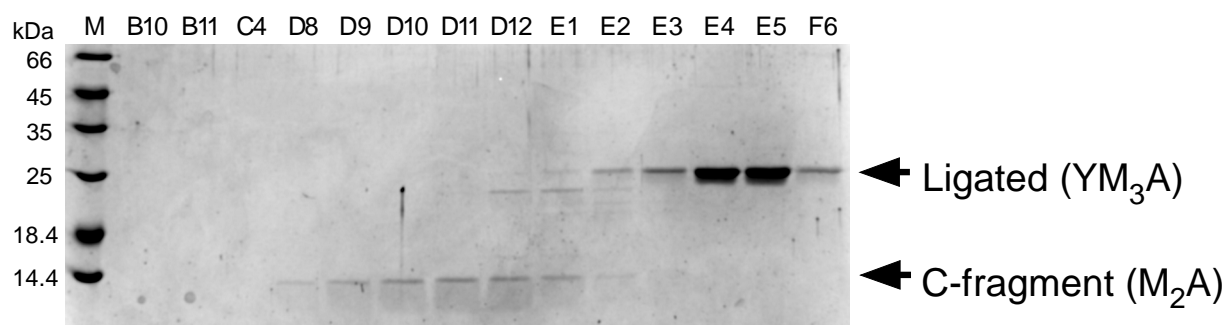


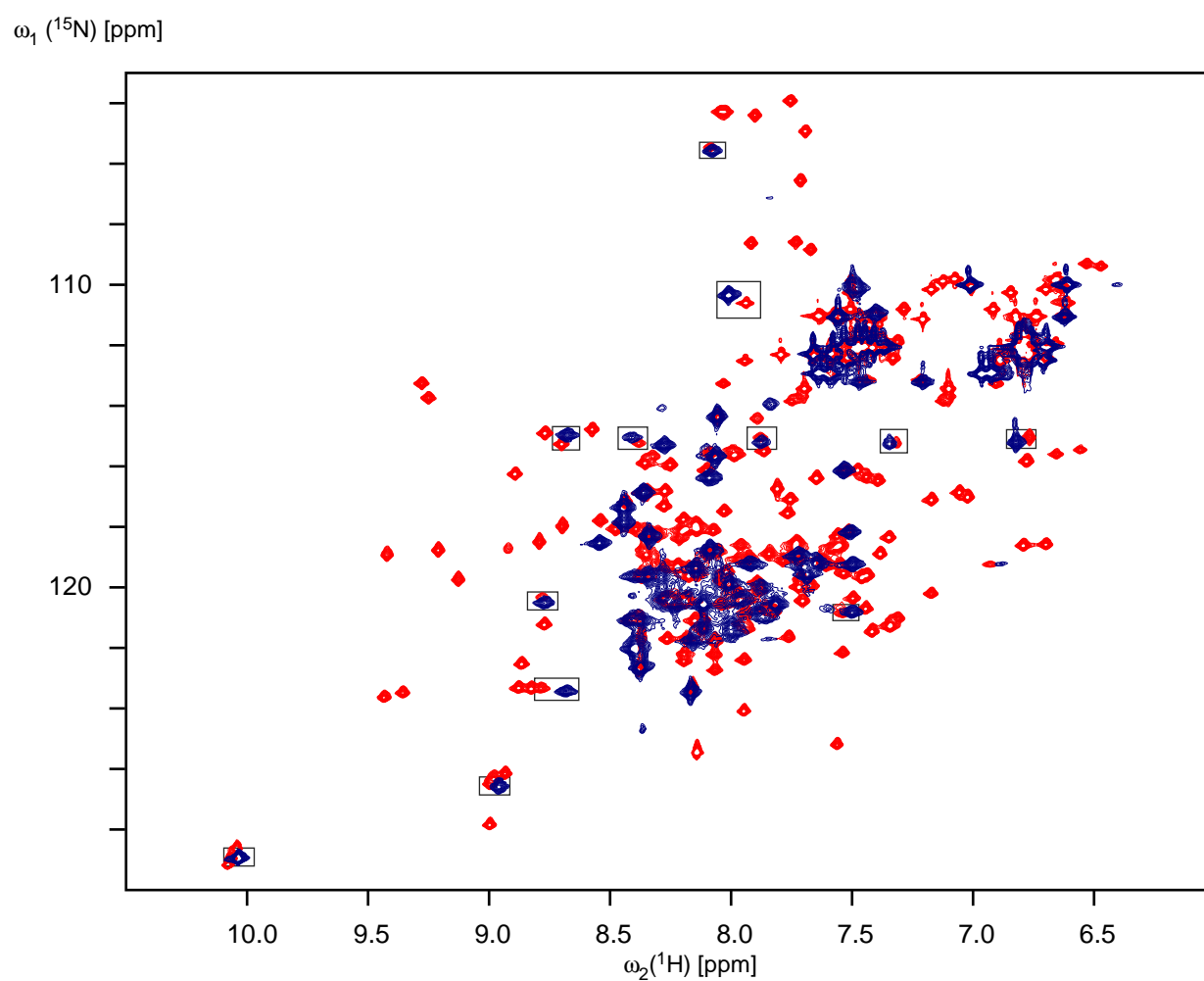
(A)



(B)



**Supplementary Figure 1: Purification of the ligated product from the reaction mixture by anion exchange chromatography. (A)** Chromatogram from anion exchange chromatography using MonoQ 5/50 GL column (GE Healthcare). **(B)** SDS-PAGE analysis of the elution fractions by a linear gradient of 250-800 mM NaCl in 20 mM Tris, pH 8.0.



**Supplementary Figure 2:** An overlay of the two HSQC spectra in Fig. 5. Some of shifted peaks are marked by rectangles.