

Supplementary Materials

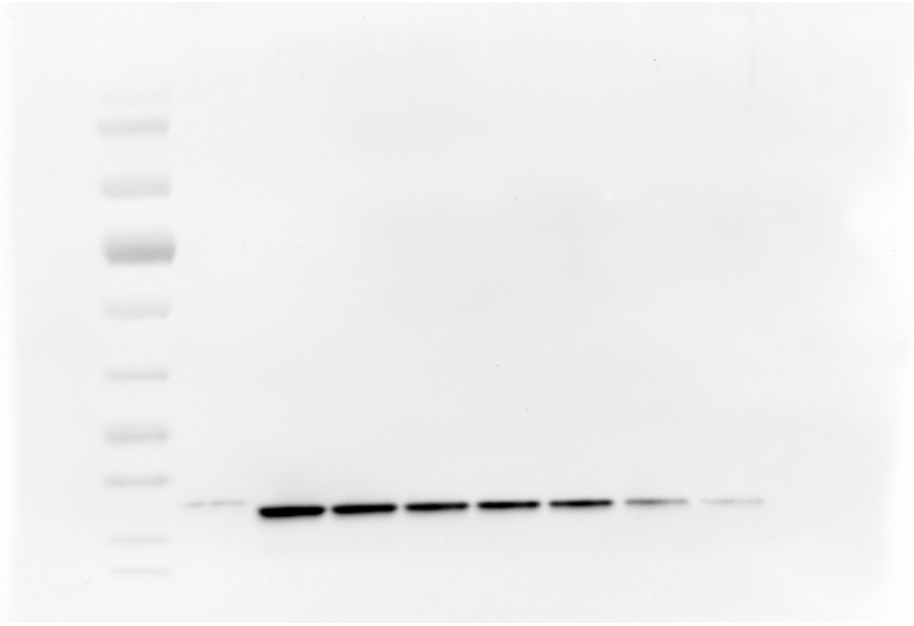


Figure S1: Liposomes incubated with azido-DARPin in BCN lipid:azide ratio of 1:5

Western Blot used for quantification of coupled protein. Lane 2: liposome sample in 2mM PL. Lane 3-10, DARPin protein samples corresponding to 100%, 75%, 50%, 40%, 30%, 20%, 10% of the total amount of protein added.

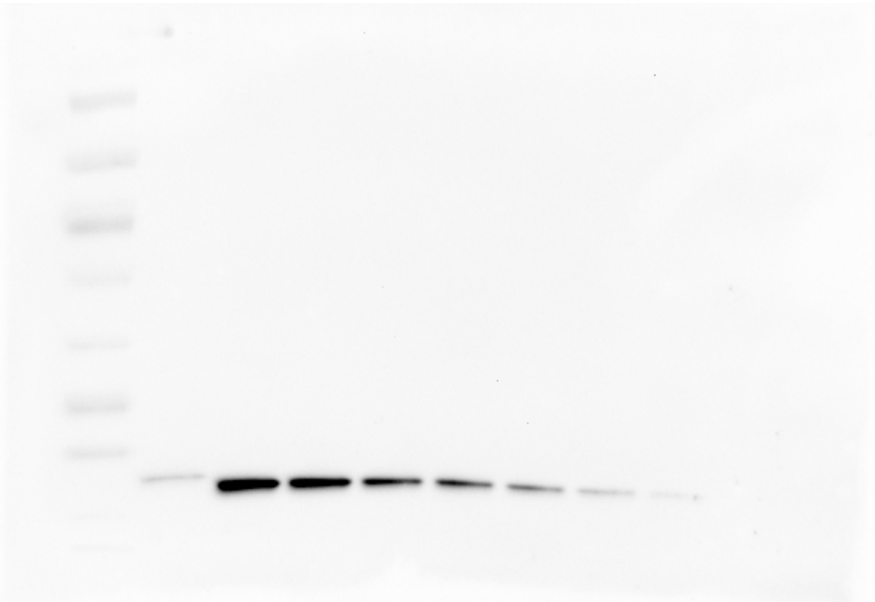


Figure S2: Liposomes incubated with azido-DARPin in BCN lipid:azide ratio of 1:10

Western Blot used for quantification of coupled protein. Lane 2: liposome sample in 2mM PL. Lane 3-10, DARPin protein samples corresponding to 100%, 75%, 50%, 40%, 30%, 20%, 10% of the total amount of protein added.

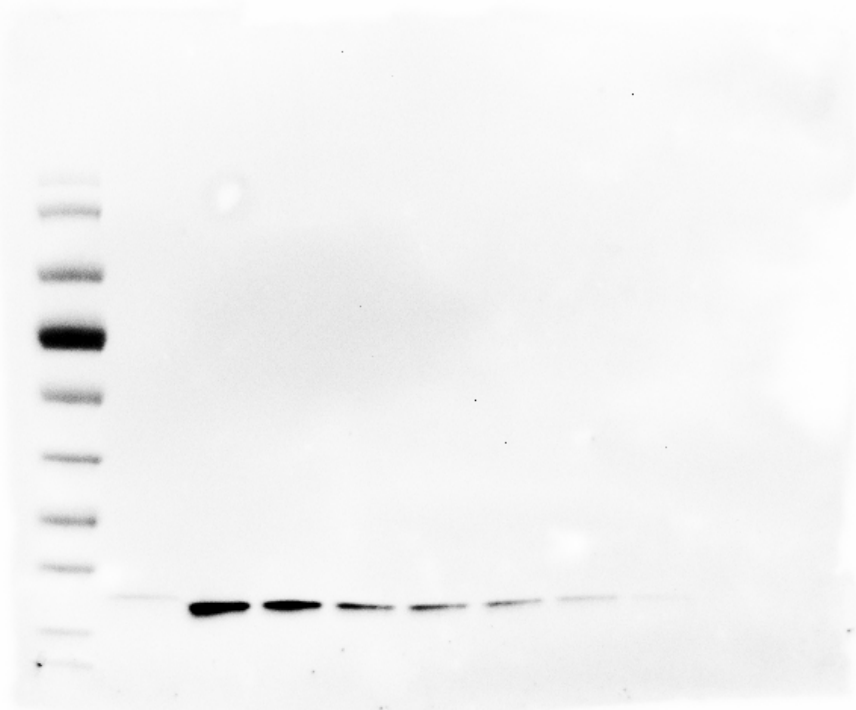


Figure S3: Liposomes incubated with azido-DARPin in BCN lipid:azide ratio of 1:20

Western Blot used for quantification of coupled protein. Lane 2: liposome sample in 2mM PL. Lane 3-10, DARPin protein samples corresponding to 100%, 75%, 50%, 40%, 30%, 20%, 10% of the total amount of protein added.

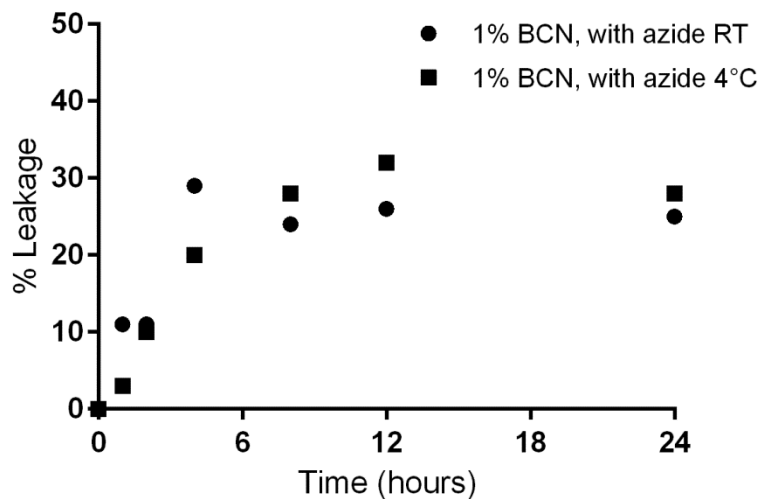


Figure S4: Leakage of calcein from liposomes under coupling conditions

Leakage from the liposomes could not be prevented by incubation at 4°C. The leakage profile is similar to that of the samples incubated at room temperature.