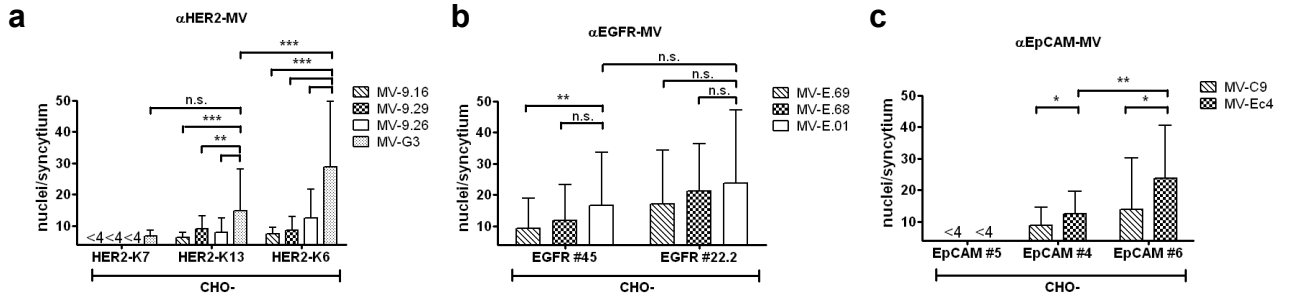
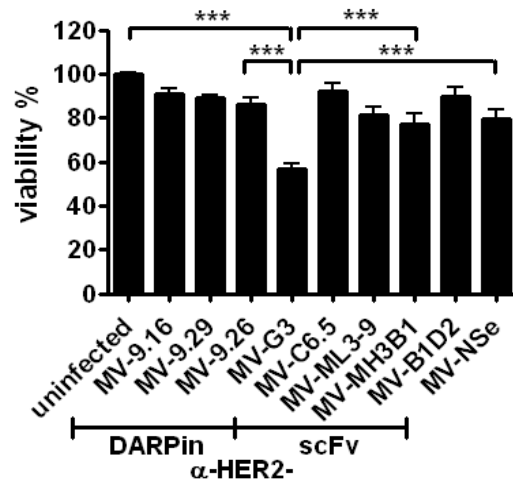


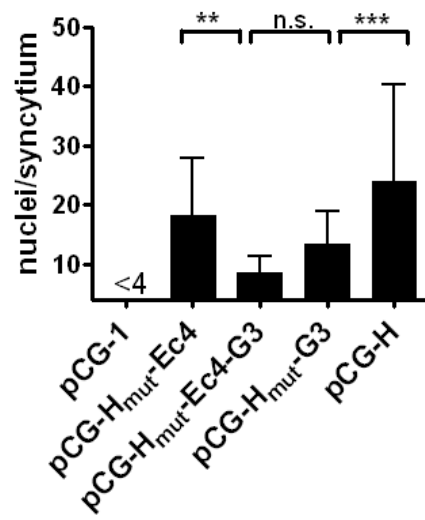
Supplementary Figure S1



Supplementary Figure S2.



Supplementary Figure S3.



Supplementary Figure S4.

Supplementary Table S1. Surface densities of transgenic CHO-cell lines.

CHO-cell clone	Receptor density <sup>a</sup>
<i>HER2</i>	
#7	$7.7 \times 10^2$
#13	$3.7 \times 10^4$
#6	$2.1 \times 10^5$
<i>EpCAM</i>	
#5	$9.9 \times 10^2$
#4	$4.2 \times 10^3$
#6	$8.5 \times 10^3$
<i>EGFR</i>	
#45	$5.2 \times 10^3$
#22.2	$3.8 \times 10^4$

<sup>a</sup>Number of respective HER2/*neu*, EpCAM or EGFR molecules per cell.

Supplementary Table S2. Median Survival of animals

Group	Median Survival [days]	95%-CI <sup>a</sup>	N <sup>b</sup>	Deaths	Surviving <sup>c</sup>
MV-NSe	103.0	62 – 106	10	8	2
MV-G3	89.0	81 – 103	11	10	1
MV-9.26	81.0	54 – 89	9	8	1
MV-MH3B1	71.5	62 – 74	10	10	0
UV-inact.	50.5	46 – 63	10	10	0
OptiMEM	49.0	46 – 49	12	12	0

<sup>a</sup>95% Confidence Interval for Median Survival

<sup>b</sup>Total number of animals per group

<sup>c</sup>Surviving animals were censored for statistical analysis